

SWING CHECK VALVE

FAF 2270



Features

- With the start of movement at defined flow direction on the system, the disc leaves the flow section by turning around its axis and allows the flow pass.
- The disc fixed inside the body in located on the flow axis.
- Sealing is achieved by metal to metal seating. Rubber coated disc is available. (Optional)
- All external surfaces are primed and painted for corrosion resistance.
- Can be installed in either vertical (upward flow only) or horizontal (cover upright) applications.
- Designed with focus on easy access to maintenance. By unscrewing a few bolts the bonnet assembly including hinge and disc can be removed from the body, and maintenance can be performed.
- Zero stem leakage eliminates media loss and satisfies environmental regulations.
- Effective for energy savings.
- Stock piled for quick delivery.

Temperature

- -10°C / + 120 °C (16 Bar)

PRODUCTION STANDARDS

DN40 → DN300
PN 10-16

Design	EN 12334 / EN16767
Connection	EN 1092-2 / ISO 7005-2 - Flanged
Face to Face	EN 558 Series 48 / DIN 3202 F6
Marking	EN 19
Tests	EN 12266-1
Corrosion Protection	Electrostatic Powder Epoxy / FBE

Product Description

FAF2270 Swing Check Valve is ideal for all basic commercial/industrial general backflow prevention applications. Durable ductile iron construction resists pipeline stresses and distortion.

Versions

- Standard version with ductile iron body and disc
- Custom production for specific orders

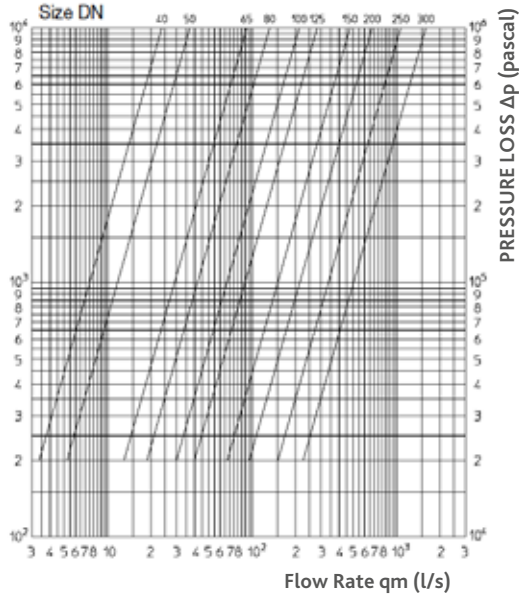
Scope of Application

- Chamber installation
- Pipelines
- Water treatment plants
- Pumping stations
- Tanks
- Seawater applications
- Power plants
- Industry

SWING CHECK VALVE FAF 2270



PRESSURE LOSS DIAGRAM



DIAMETER	Kv
DN 40	85
DN 50	132
DN 65	326
DN 80	490
DN 100	770
DN 125	1020
DN 150	1700
DN 200	2410
DN 250	3870
DN 300	5670

MATERIAL SELECTION

Body EN-GJS-500 Ductile Iron / GGG50

Bonnet EN-GJS-500 Ductile Iron / GGG50

Stem 1.4021 - AISI 420 Stainless Steel
1.4301 - AISI 304 Stainless Steel (Optional)
1.4401 - AISI 316 Stainless Steel (Optional)

Sealing EPDM

Coating Electrostatic Powder Epoxy / FBE

PRODUCTS MODEL CODES

FAF2270	SWING CHECK VALVE - PN16
FAF2271	SWING CHECK VALVE - PN10 (Optional)

VALVE TEST PRESSURE (Bar)

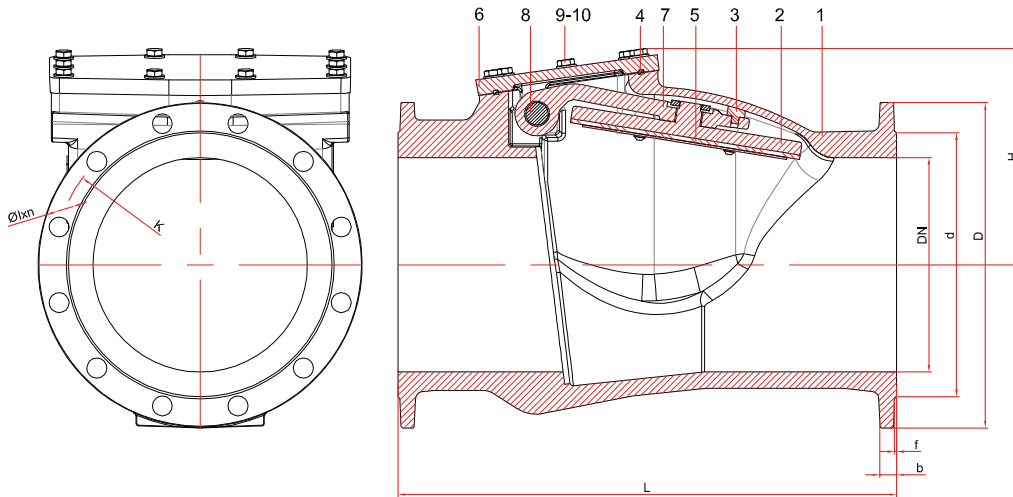
MAX. OPERATING PRESSURE	BODY / SHELL TEST	SEAT TEST
10	15	11
16	24	17,6

100% of the valves are subjected to hydrostatic tests at FAF facilities.

Note

- For proper use and safety precautions please follow the installation and operating instructions.

Technical Details & Drawing, Dimensions



Material List

NO	ITEM	MATERIALS
1	BODY	GJS50 DUCTILE IRON
2	DISC	ST37 STEEL
3	SCREWED WEDGE	SCREW EPDM
4	BONNET GASKET	EPDM
5	SEALING GASKET	EPDM
6	BONNET	GJS50 DUCTILE IRON
7	HINGE	EN GJS 500 SFERO DÖKÜM
8	KEY	STAINLESS STEEL 1.4021
9	BOLT	GALVANISED STEEL
10	WASHER	GALVANISED STEEL

DN	D	K	d	Øl x n	f	b	L	H	Weight (kg)
50	165	125	99	19x4	3	19	200	120	9,9
65	185	145	118	19x4	3	19	240	145	13,3
80	200	160	132	19x8	3	19	260	155	15,5
100	220	180	156	19x8	3	19	300	160	19,2
125	250	210	184	19x8	3	19	350	175	30,4
150	285	240	211	23x8	3	19	400	185	45,2
200	340	295	266	23x12	4	20	500	235	65,4
250	400	355	319	28x12	4	22	600	270	103,1
300	455	410	370	28x12	4	24,5	700	305	149,5