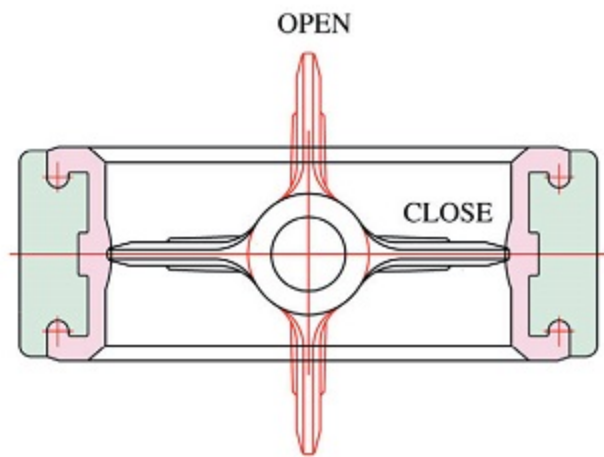




Design Features

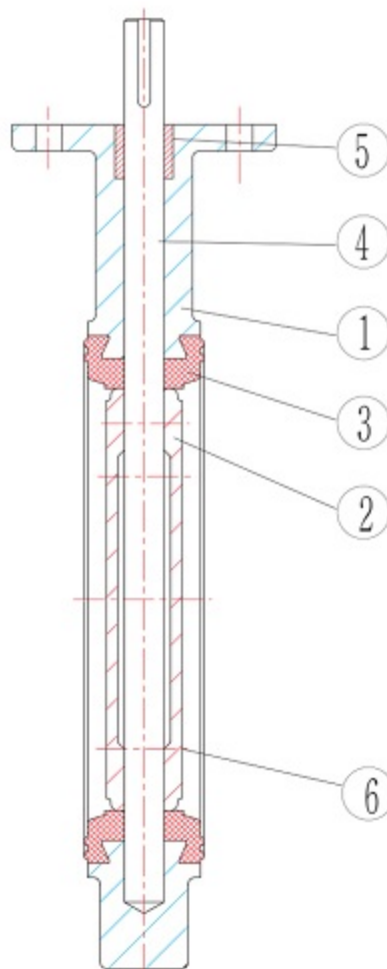


General Features

- 100% bi-directional tight shut off.
- Installation without restriction in direction of flow.
- Reduced weight and overall dimensions.
- Low pressure loss and reduced energy costs.
- High Kv/Cv values.
- Easy to clean and disinfect for portable water systems etc.
- Self cleaning (No residue will be trapped).
- Good resistance to corrosion.
- High reliability

No screw between disc and shaft

The disc and shaft connection features all of the benefits of a high strength 2 piece design with the disadvantage associate with designs using taper pins or disc screws which often fail through abrasion, corrosion or fatigue. The disc edge is spherically machined and hand polished to produce a bubble-tight shut off minimum torque and longer seat life. 28”(DN700) & above size of disc & stem will connect by “taper pin”



No gasket required

O-rings or gaskets are not required when installation.

Low torque

SW Valve discs are spherical machined and polished. Every parts of sealing surface is spherical. These fit together with a smooth and low torque when close and open. The raised center seat has the cosine-curve structure.

Perfect Sealing

Seat and disc is sealed as flat surface matched both top and bottom shaft point. This unique sealing gives perfect tight at low torque and smooth touch. And gasket with 3 molded O-rings gives self-adjusting and positive sealing in both directions.

Top Flange

Top Flange dimensions are in accordance with ISO5211 and it matches with any type of actuators.

Testing

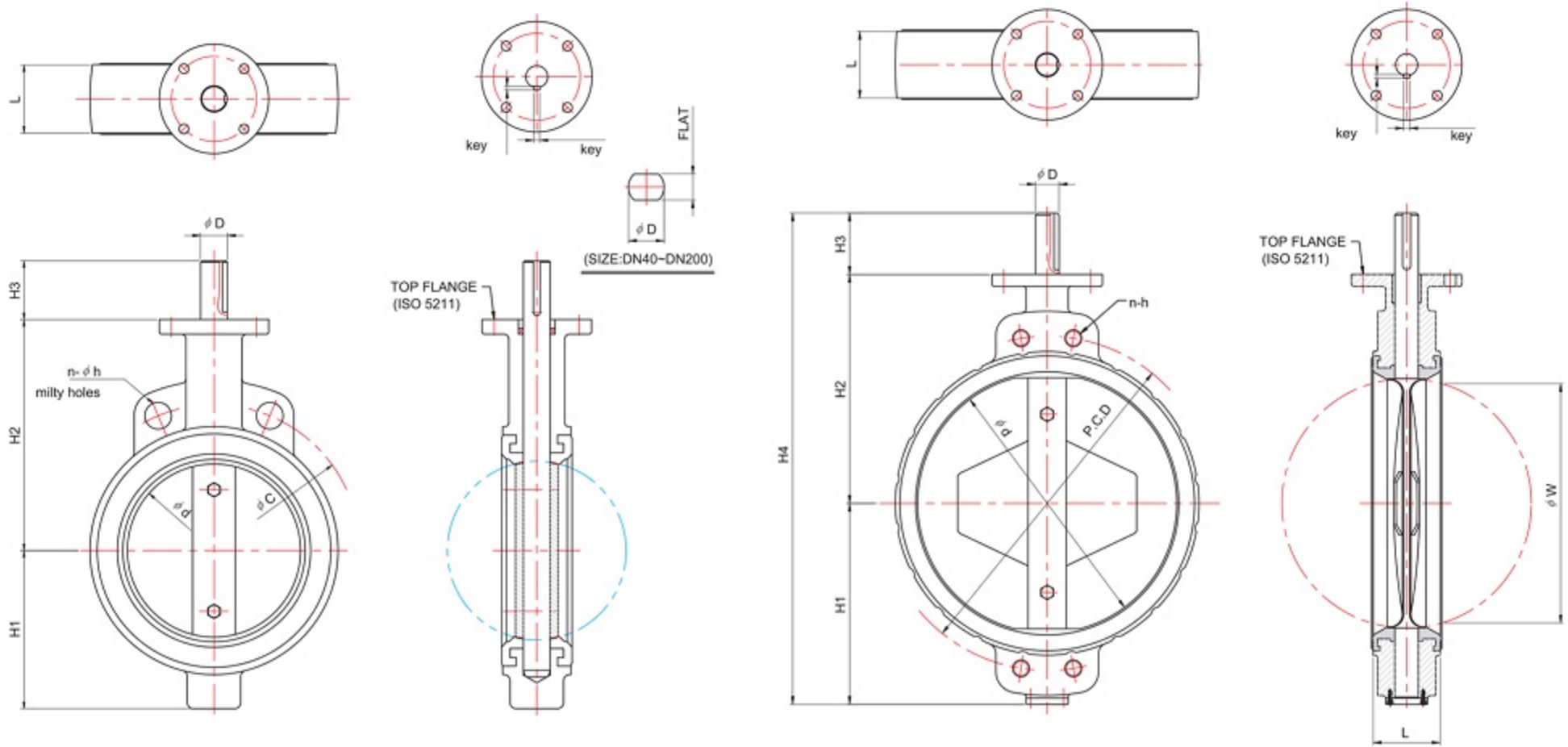
SW Valve butterfly valves are confirm to API 598 and BS5155. Body pressure test to be done 150% and shell to be 110% of maximum working pressure.

Operations

The following operation of the valves are possible, the choice is depending upon the valve location and the type of work and service for which the valve is used.

- Bare stem type valve only
- valve with 10 position lever operated
- valve with gear operated
- valve with electric actuator
- valve with pneumatic actuator
- valve with hydraulic actuator

P.NO.	PART NAME	MATERIAL
1	BODY	CAST IRON / DUCTILE IRON CARBON STEEL / SS304 / SS316 ALUMINUM / ALUMINUM BRONZE
2	DISC	DUCTILE IRON(+NICKEL PLATED) CARBON STEEL(+NICKEL PLATED) SS304 / SS316 / ALUMINUM BRONZE
3	SEAT	RUBBER (NBR / SILICON / EPDM / VITON / NEOPRENE)
4	STEM	STAINLESS STEEL (SS410 / SS304 / SS316 / SS630 / MONEL)
5	PACKING	NBR
6	DISC BOLT	STAINLESS STEEL



VALVE DIMENSIONS

unit : mm

SIZE		ø d	L	H1	H2	H3	STEM		TOP FLANGE (ISO5211)	JIS 10K			ANSI 150LB			BS 4504 PN10			WEIGHT (APPROX.) (kg)
inch	mm						D	key		øC	n	h	øC	n	h	øC	n	h	
1.5"	40	40	40	54	120	33	14	FL'10	F 07	105	4	19	98.5	4	16	110	4	19	2.5
2"	50	52	43	68	130	33	14	FL'10	F 07	120	4	19	120.5	4	19	125	4	19	3.0
2.5"	65	64	46	77	138	33	14	FL'10	F 07	140	4	19	139.5	4	19	145	4	19	4.0
3"	80	76	46	84	157	33	16	FL'12	F 07	150	8	19	152.5	4	19	160	8	19	4.5
4"	100	101	52	105	170	33	16	FL'12	F 07	175	8	19	190.5	8	19	180	8	19	5.0
5"	125	126	56	120	186	33	19	FL'15	F 07	210	8	23	216.0	8	22	210	8	19	6.5
6"	150	149	56	135	200	33	19	FL'15	F 07	240	8	23	241.5	8	22	240	8	23	8.0
8"	200	196	60	183	237	33	22	FL'18	F 07	290	12	23	298.5	8	22	295	8	23	12.5
10"	250	244	68	223	286	50	22	8 X 7	F 10	355	12	25	362.0	12	25	350	12	23	19.5
12"	300	294	78	255	314	50	28	8 X 7	F 10	400	16	25	432.0	12	25	400	12	23	30.5
14"	350	333	78	280	340	50	28	8 X 7	F 10	445	16	25	476.0	12	29	460	16	23	55.0
16"	400	384	102	310	378	60	38	12 X 8	F 14	510	16	27	539.5	16	29	515	16	28	70.0
18"	450	435	114	350	400	60	38	12 X 8	F 14	565	20	27	578.0	16	32	565	20	28	95.0
20"	500	485	127	380	440	80	45	14 X 9	F 16	620	20	27	635.0	20	32	620	20	28	128.0
22"	550	534	142	396	485	80	55	14 X 9	F 16	680	20	M30	392.2	20	1 1/4	-	-	-	180.0
24"	600	573	154	448	510	80	55	14 X 9	F 16	730	24	M30	749.5	20	1 1/4	725	20	M27	222.0
26"	650	624	165	463	530	80	55	14 X 9	F 16	780	24	M30	806.5	24	1 1/4	-	-	-	265.0
28"	700	674	165	500	580	110	65	18X11	F 16	840	24	M30	863.5	28	1 1/4	840	24	M27	295.0
30"	750	716	190	520	590	110	65	18X11	F 25	900	24	M30	914.5	28	1 1/4	-	-	-	350.0
32"	800	767	190	565	630	110	75	20X12	F 25	950	28	M30	978.0	28	1 1/2	950	24	M30	430.0
36"	900	860	203	670	700	150	90	22X14	F 25	1050	28	M30	1086.0	32	1 1/2	1050	28	M30	600.0
40"	1000	970	216	725	750	150	90	22X14	F 25	1160	28	M36	1200.0	36	1 1/2	1160	28	M33	720.0
44"	1100	1010	216	780	840	150	90	22X14	F 25	1270	28	M36	1314.5	40	1 1/2	-	-	-	805.0
48"	1200	1173	254	860	900	150	90	22X14	F 25	1380	32	M36	1422.4	44	1 1/2	1380	32	M36	860.0
52	1300	1272	280	920	970	180	120	32X18	F 30	-	-	-	1537	44	1 3/8	-	-	-	940.0
56	1400	1371	280	970	1010	180	120	32X18	F 30	-	-	-	-	-	-	1590	36	M39	1100.0
64	1600	1572	360	1120	1160	180	140	32X18	F 35	-	-	-	-	-	-	1820	40	M45	1450.0
72	1800	1740	360	1210	1270	200	170	40X22	F 40	-	-	-	2095.5	60	1 3/8	2020	44	M45	1850.0